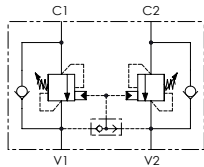
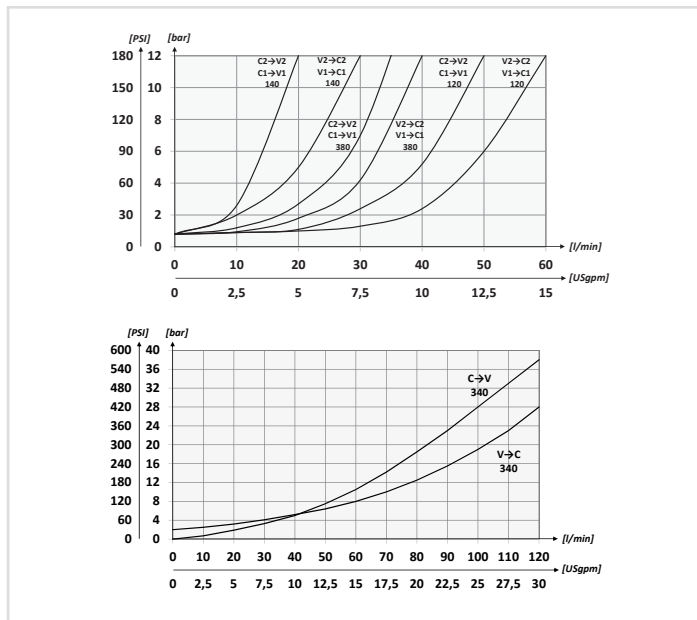




SCHEMA IDRAULICO / HYDRAULIC CIRCUIT



PERFORMANCES

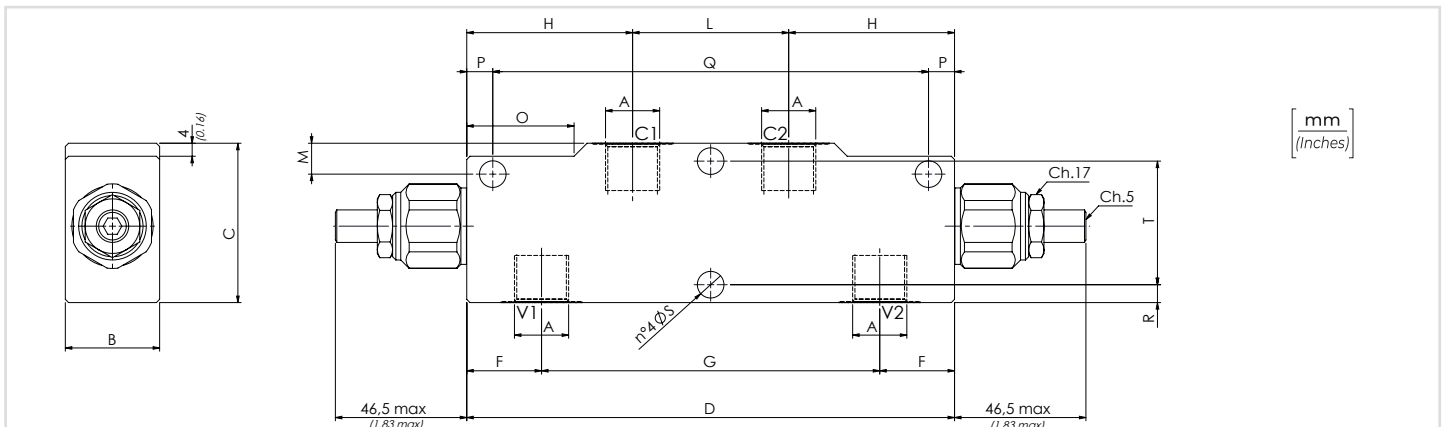


CODICE ORDINAZIONE / ORDERING CODE		01	02	03	04	05	
VBCD							
01	VALVOLE DI BILANCIAMENTO DOPPIE PER CENTRO APERTO (DOUBLE COUNTERBALANCE VALVES FOR OPEN CENTER)					VBCD	
02	DIMENSIONE (SIZE)	BSPP 1/4				140	
		BSPP 3/8				380	
		BSPP 1/2				120	
		BSPP 3/4				340	
03	MOLLA (SPRING) 30/210 bar (435/3045 PSI)	Rp 1:4.25	140	78 bar/al giro (1131 PSI/turn)	Taratura standard (Std. setting)	1	
		Rp 1:8.75	120				160 bar/al giro (2320 PSI/turn)
	MOLLA (SPRING) 60/350 bar (870/5075 PSI)	Rp 1:4.25	140	135 bar/al giro (1958 PSI/turn)	Taratura standard (Std. setting)		
		Rp 1:8.75	120				160 bar/al giro (2320 PSI/turn)
	MOLLA (SPRING) 60/350 bar (870/5075 PSI)	Rp 1:6.2	340	143 bar/al giro (2074 PSI/turn)	Taratura standard (Std. setting)		
		Rp 1:10.6					242 bar/al giro (3509 PSI/turn)
04	MATERIALE (MATERIAL)	Acciaio + zincatura (Steel + zinc-plating)			S		
		Acciaio + zinco-nichel (Steel + zinc-nickel)			K		
05	RAPPORTO DI PILOTAGGIO (PILOT RATIO)	140	1:4.25 Standard		/		
		380	1:8.75		8		
		120	1:6.2		/		
		340	1:10,6		11		

Opzione: Tappo piombatura - Optional: Tamper proof cap **81300095**

DATI TECNICI / TECHNICAL DATA

Olio idraulico - Mineral oil	ISO 6743/4 (DIN 51524)
Viscosità olio - Oil viscosity	15-250 mm ² /s (15 to 250 cSt)
Classe di contaminazione max Max contamination index	ISO 4406:1999 Classe 18/16/13
Temperatura dell'olio - Oil temperature	-20°C +80°C -4°F +176°F
Temperatura ambiente - Environment temperature	-20°C +50°C -4°F +122°F
È indispensabile l'utilizzo di un filtro per proteggere la valvola (filtrazione consigliata 15 µm) It is necessary a filter use to protect the valve (advised filtration 15 µm)	
Trafilamento@46cSt & 200 bar Leakage@46cSt & 200 bar	0,25 cm ³ /min - 5 gocce/min 0,015 in ³ /min - 5 drops/min



CARATTERISTICHE TECNICHE / TECHNICAL CHARACTERISTICS

TIPO TYPE	A	PORTATA MAX MAX FLOW l/min-USgpm	PRESSIONE MAX MAX PRESSURE bar-PSI	B	C	D	F	G	H	L	M	O	P	Q	R	S	T	Peso Approx Approx weight kg-lbt		
VBCD140	BSPP 1/4	30 (7.9)	350 (5075)	29 (1.14)	49 (1.93)	150 (5.91)	23 (0.91)	104 (4.09)	51 (2.01)	48 (1.89)	10 (0.39)	33 (1.30)	8 (0.31)	134 (5.28)	5,5 (0.22)	8,2 (0.32)	38 (1.50)	1,57 (3,46)		
VBCD380	BSPP 3/8	40 (10.6)																43 (1.69)	1,55 (3,41)	
VBCD120	BSPP 1/2	60 (15.9)																7,5 (0.29)	43 (1.69)	1,78 (3,92)
VBCD340	BSPP 3/4	120 (31.7)																8,5 (0.33)	10,5 (0.41)	52 (2.05)