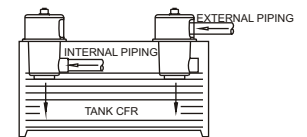
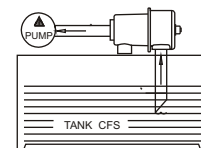
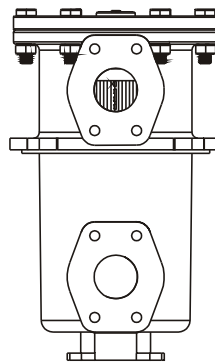
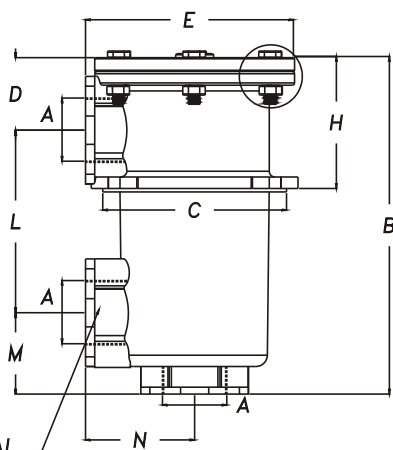
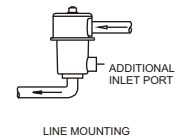
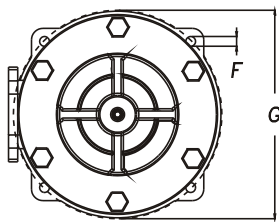


FILTER - TANK / LINE MOUNTED - CFR



- DIRECT TANK OR LINE MOUNT
- 5 SIZES - FLOWS TO 700 LPM
- BY PASS STANDARD 1 BAR RETURN / 0.35 BAR SUCTION
- ALUMINIUM DIECAST CONSTRUCTION
- WORKING PRESSURE TO 20 BAR / TEST 30 BAR / BURST 40 BAR
- CAN BE USED FOR RETURN / SUCTION LINES
- MAX TEMP. TO 80° C
- SUITABLE FOR MINERAL / PETROLEUM BASED OILS



ADDITIONAL INLET PORT

MODEL	PORT 'A' BSPP	TANK B	TANK CUT OUT C	D	E	F	G	H	L	M	N	WT KGS
CFR* - 025	1/2"	117	83	29	98	5.6	93	46	56	33	52	0.8
CFR* - 040	3/4"	176	121	43	117	6.5	138	77	110	26	58	2.0
CFR* - 100	1"	257	134	64	143	6.5	154	113	140	52	71	3.2
CFR* - 250	1 - 1/2"	300	161	65	182	8.5	180	117	159	77	88	5.5
CFR* - 630	2 - 1/2" SAE-FL	353	232	78	244	10.5	275	146	178	95	124	10.0

DIMENSIONS IN MM FOR REFERENCE ONLY

FILTER - TANK / LINE MOUNTED - CFR



MODEL CODE : ASSEMBLY

CFR	2	- 0 2 5	- 04*	- 0 1 0	- *	- *
SERIES	SIZE	PORT CONNECTION		FILTRATION	FEATURE	FEATURE
		INCH		μ MICRONS	BY Pass (OMIT IF STD)	SPECIAL #
R - RETURN	0 2 5	04 B	- 1/2" BSPP	P10 - 10 μ NOM P25 - 25 μ NOM A10 - 10 μ ABS A25 - 25 μ ABS M 149 - 149 μ MESH M 74 - 74 μ MESH	R3 - 15PSI (STD) R4 - 25 PSI S1 - 3PSI (STD) S2 - 5PSI	1 - SAE FLANGE WITH M12x1.75 (STD)
		04 N	- 1/2" NPT			
		08 S	- 3/4" UNF - 16			
0 4 0	06 B	- 3/4" BSPP				
	06 N	- 3/4" NPT				
	12 S	- 1-1/16" UNF - 12				
S - SUCTION	1 0 0	08 SF	- 1" SAE FLANGE			
		08 B	- 1" BSPP			
		08 N	- 1" NPT			
2 - ADDL INLET PORT (OPTIONAL #)	2 5 0	16 S	- 1-5/16" UNF - 12			
		12 SF	- 1-1/2" SAE FLANGE			
		12 B	- 1-1/2" BSPP			
		12 N	- 1-1/2" NPT			
		24 S	- 1- 7/8" UNF - 12			
	6 3 0	20 SF	- 2-1/2" SAE FLANGE			2 - SAE FLANGE WITH 1/2"UNC-13 (OPTIONAL) OMIT IF STD.

Consult Factory For Tapped Holes For Cover Bolts

INDICATOR : OPTIONAL (TO BE ORDERED SEPERATELY)

Element : P10 / P25 Was 010 / 025

GR - VISUAL RETURN

ER - ELEC. RETURN

GS - VISUAL SUCTION

ES - ELEC. SUCTION

MODEL CODE : ELEMENT

CE	- 0 2 5	- 0 1 0	- Feature
SERIES	SIZE	FILTRATION	- # Omit If Standard
		μ MICRONS	
CE	0 2 5	P10 - 10 μ NOM	S3 - 10 BAR Collapse Strength
	0 4 0	P25 - 25 μ NOM	
	1 0 0	A10 - 10 μ ABS	
		A25 - 25 μ ABS	
	2 5 0	M149 - 149 μ MESH	
	6 3 0	M74 - 74 μ MESH	

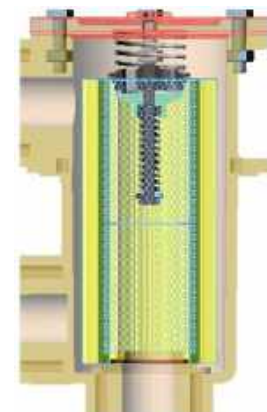
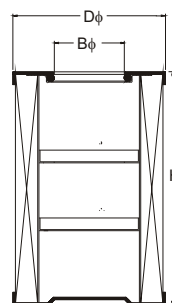
MODEL CODE : SEALKIT

CFR	- 0 2 5	-SK
SERIES	SIZE	SEALKIT
CFR	0 2 5	SK
	0 4 0	SK
	1 0 0	SK
	2 5 0	SK
	6 3 0	SK

* Optional Filtration Mesh Elements Available
M43 , M63 , M100 ,M125, M300 & M575 microns

Element Details Ht

SIZE	D φ	B φ	H	Area SqCm		
				P-10/25	A-10/25	M - ***
CE - 025	52	25.0	72	710	500	325
CE - 040	70	34.5	86	1750	1250	600
CE - 100	70	34.5	130	2650	1880	900
CE - 250	100	51.0	210	7900	5500	2200
CE - 630	135	75.0	250	14500	10100	3500



M *** All Mesh Elements

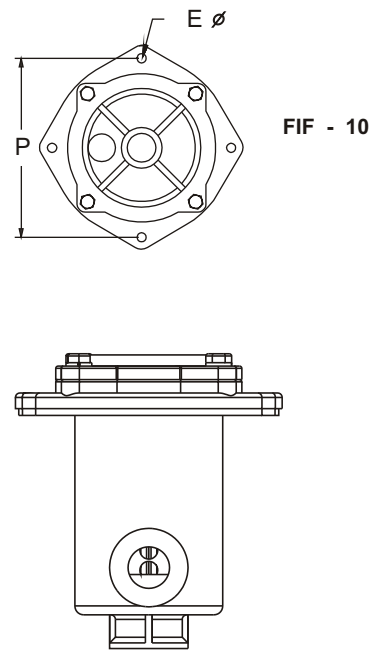
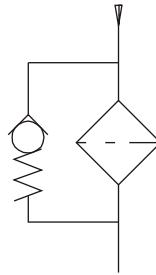
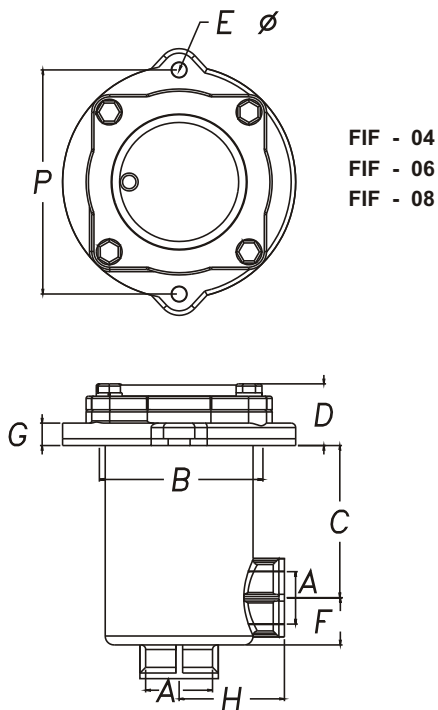
CONSULT FACTORY FOR ANY OTHER REQUIREMENT

DIMENSIONS IN MM FOR REFERENCE ONLY

FILTER - TANK IMMERSED-FIF



- DIRECT TANK MOUNTING
- PRESSURE MAX. 10 BAR / TEST 20 BAR / BURST 25 BAR
- ALL ALUMINIUM DIE CAST CONSTRUCTION
- 4 SIZES - FLOWS TO 150 LPM
- BY PASS STANDARD 1 BAR
- ELEMENTS REPLACEBLE THROUGH COVER
- SUITABLE FOR MINERAL / PETROLEUM BASED OILS
- MAX TEMP. 80 deg C



MODEL	PORT 'A' BSPP	B	C	D	Eφ	F	G	H	P	COVER BOLT 4 OFF	WT KGS
FIF - 04	1/2 "	80	71	23	7	34	7	48	100	M 6	0.9
FIF - 06	3/4 "	105	68	24	9	48	10	58	126	M 6	1.4
FIF - 08	1 "	105	110	24	9	55	10	58	126	M 6	1.6
FIF - 10	1 - 1/4 "	156	190	35	9	62	14	83	175	M 8	3.0

DIMENSIONS IN MM FOR REFERENCE ONLY

FILTER - TANK IMMERSED - FIF



MODEL CODE : ASSEMBLY

FIF	- 04 *	- Element	- Feature	
Series	PORT THREAD	- Filtration Micron	- # Omit If Standard	
FIF	04 B - 1/2" BSPP	P10 - 10µ NOM	R3 - 15 PSI BYPASS STANDARD	
	04 N - 1/2" NPT	P25 - 25µ NOM		
	08 S - 3/4" UNF - 16	A10 - 10µ ABS		
	06 B - 3/4" BSPP	A25 - 25µ ABS		
	06 N - 3/4" NPT	M149 - 149µ MESH		R4 - 25 PSI BYPASS OPTIONAL
	12 S - 1-1/16" UNF - 12	M100 - 100µ MESH		
	08 B - 1" BSPP	M074 - 074µ MESH		
	08 N - 1" NPT	M063 - 063µ MESH		
	16 S - 1-5/16" UNF - 12			
	10 B - 1-1/4" BSPP			
	10 N - 1-1/4" NPT			
	20 S - 1- 5/8" UNF - 12			

INDICATOR : OPTIONAL (TO BE ORDERED SEPERATELY)

GR - VISUAL RETURN E R - ELEC. RETURN

Element : P10 / P25 Was 010 / 025

MODEL CODE : ELEMENT

FIE	- 08	- 010	- Feature	
SERIES	SIZE	FILTRATION µ MICRON	- # Omit If Standard	
FIE	04	P10 - 10 µ NOM	R3 - 15 PSI BYPASS STANDARD	
		P25 - 25 µ NOM		
	06	A10 - 10 µ ABS		
		A25 - 25 µ ABS		
	08	M149 - 149 µ MESH		R4 - 25 PSI BYPASS OPTIONAL
		M100 - 100 µ MESH		
	10	M074 - 074 µ MESH		
M063 - 063 µ MESH				

WITH BYPASS

OPTIONAL / SPECIAL FEATURE - OMIT IF NOT REQUIRED

Consult Factory For Tapped Holes For Cover Bolts

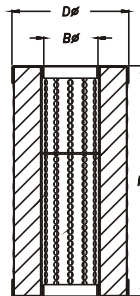
MODEL CODE : SEAL KIT

FIF	- 08	-SK
SERIES	SIZE	SEAL KIT
FIF	04	SK
	06	SK
	08	SK
	10	SK

OPTIONAL / SPECIAL FEATURE - OMIT IF NOT REQUIRED

Element Details

SIZE	D φ	B φ	H	Area SqCm		
				P-10/25	A-10/25	M - ***
FIE - 04	52	25.5	72	710	500	325
FIE - 06	66	30.5	85	1225	875	425
FIE - 08	66	30.5	130	2450	1750	665
FIE - 10	95	40.5	200	6120	4300	2360



M *** All Mesh Elements

CONSULT FACTORY FOR ANY OTHER REQUIREMENT



DIMENSIONS IN MM FOR REFERENCE ONLY

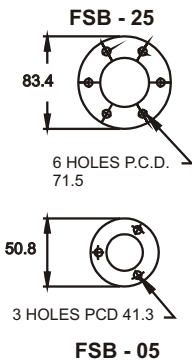
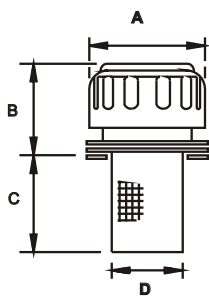
BREATHER - FSB / TB



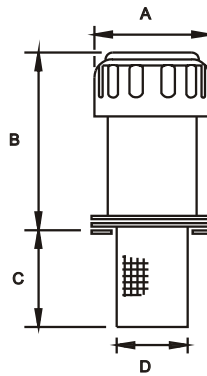
- CHROME PLATED STEEL CAP - VENTS UNDERNEATH
- ALTERNATELY CAP FINISH ZINC BLUE (ROHS) / POWDER COATED
- FILTRATION 40 MICRONS STANDARD / OPTIONAL 10 & 3 MICRONS
- AIR FLOWS TO 25 CFM (750 LPM)
- RUGGED CAST ALUMINIUM HOUSING (FOR BM MODEL)
- METAL STRAINER - STANDARD
- HARDWARE INCLUDES GASKETS & (10-32) SCREWS



FLANGE TYPE

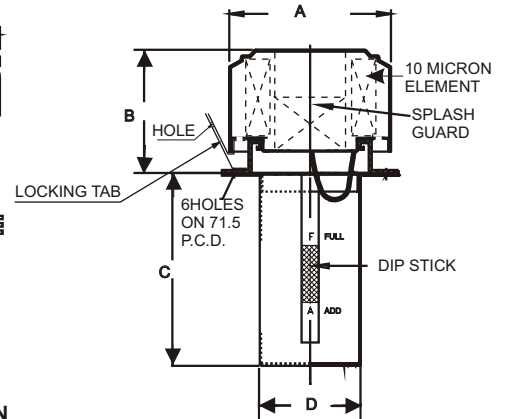


FLANGE TYPE HIGH NECK

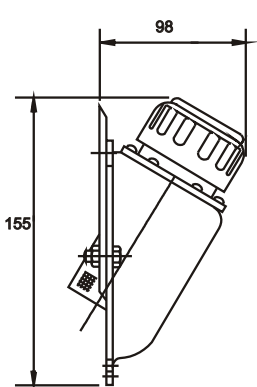


FSB-25 HN

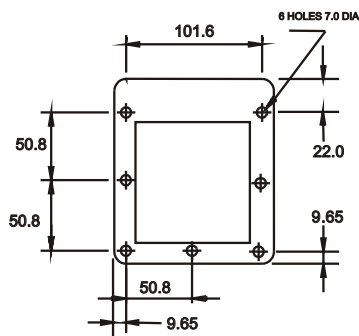
OPTIONAL FEATURES



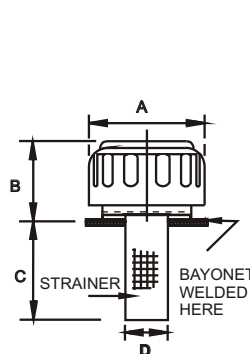
SIDE MOUNT



FSB - 25 BM

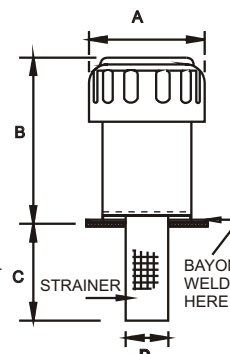


WELD TYPE



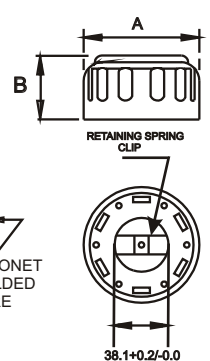
FSBW - 25

WELD TYPE HIGH NECK



FSBW - 25 HN

PUSH ON TYPE



PB-25

OPTIONAL / SPECIAL FEATURE (CONSULT FACTORY) - OMIT IF NOT REQUIRED

BREATHER - FSB / TB



MODEL	DISPLACEMENT		RATING				WT	
			MICRONS					KGS
			A	B	C *	D		
FSB - 05	150	LPM	40					
				45	49	65	28	0.10
FSB - 05 - 10	90	LPM	10					
FSB - 25	720	LPM	40	77	62	91	48	0.25
FSB - 25 - 10	400	LPM	10	77	62	91	48	0.25
FSBW - 25	720	LPM	40	77	62	91	30	0.25
FSB - 25-HN	720	LPM	40	77	122	91	48	0.40
FSBW - 25-HN	720	LPM	40	77	122	91	30	0.40
PB - 25	720	LPM	40	77	50	-	-	0.21

MODEL CODE : ASSEMBLY

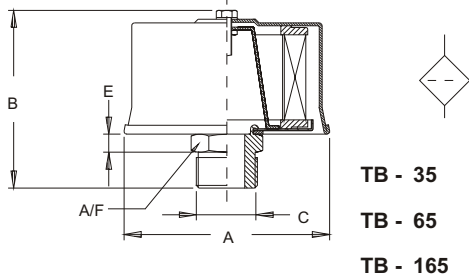
FSB *	- 25	- * *	- BM	- **	- **	- ***	- *
SERIES	CAPACITY CFM	FILTRATION μ MICRONS	FEATURE OPTIONAL (1)	STRAINER C * OPTIONAL(2)	FEATURE 1 OPTIONAL # (OMIT IF NOT REQD)	FEATURE 2 OPTIONAL # (OMIT IF NOT REQD)	FEATURE 3 OPTIONAL # (OMIT IF NOT REQD)
FSB	05 (150 LPM)	40 - 40 μ Std		STD		CONSULT FACTORY	
FSB	25 (750 LPM)	10 - 10 μ Nom	BM - SIDE MOUNT	L 4 - STD	LT - LOCKING TAB	DS 4 - DIP STICK 4"	B - BLACK POWDER COATED CAP
FSBW		03 - 3 μ Nom	HN - HIGH NECK	L 6 - 152 m m	P 5 - Pressurised 5psi	DS 6 - DIP STICK 6"	Z - ZINC BLUE LACQUER COATED CAP
				L 8 - 203 m m	SG - SPLASH GUARD	DS 8 - DIP STICK 8"	

OPTIONAL / SPECIAL FEATURE (CONSULT FACTORY) - OMIT IF NOT REQUIRED

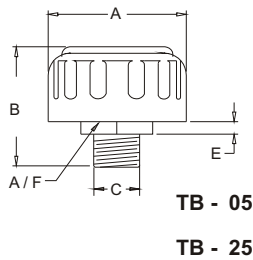
BREATHER - FSB / TB



THREADED TYPE



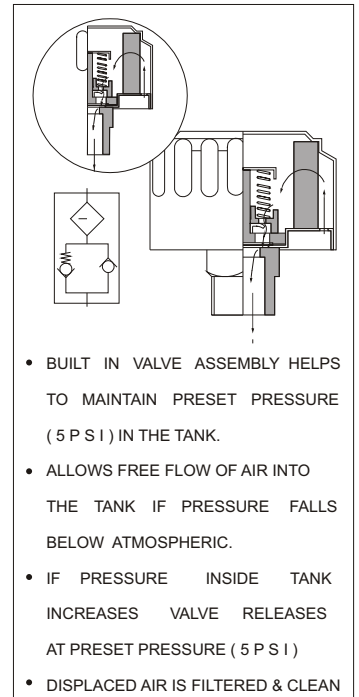
TB - 35
TB - 65
TB - 165



TB - 05
TB - 25



P - FEATURE

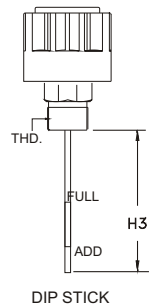


MODEL	DISPLACEMENT		RATING MICRON	A	B	C STD IN BSPP	E	A / F	WT KGS
TB . 05 .	150	LPM	40						
				45	63	1/4"	8	25	0 . 13
TB . 05 . 10	90	LPM	10						
TB . 25 .	720	LPM	40						
				77	75	3/4"	10	30	0 . 25
TB . 25 . 10	400	LPM	10						
TB . 35 .	1000	LPM	10	110	138	1 - 1/2"	12	55	0 . 40
TB . 65 .	2000	LPM	10	145	145	2"	15	65	0 . 55
TB . 165 .	4000	LPM	10	185	195	2 - 1/2"	15	80	1 . 30

Note : TB 35 / 65 / 165 Nylon Housing

MODEL CODE : ASSEMBLY

TB	- 05	- 10	- * * *		- P	- *
SERIES	CAPACITY CFM	FILTRATION μ MICRONS	THREADS OPTIONAL #		FEATURE SPECIAL #	FEATURE 3 OPTIONAL # (OMIT IF NOT REQD)
TB	05	40 - 40 μ Std	03 - 3/8"		P - PRESSURISED (5 P S I) SG - SPLASH GUARD DS 4 - DIP STICK 4" DS 6 - DIP STICK 6" (Ref - H3) DS 8 - DIP STICK 8"	B - BLACK POWDER COATED CAP Z - ZINC BLUE LACQUER COATED CAP
			04 - 1/2"			
		10 - 10 μ Nom	04 - 1/2"			
			08 - 1"			
	25	03 - 3 μ Nom	N - NPT			
			S - SAE			
	35	10 - 10 μ Nom	10 - 1-1/4"			
65	10 - 10 μ Nom					
165	10 - 10 μ Nom					

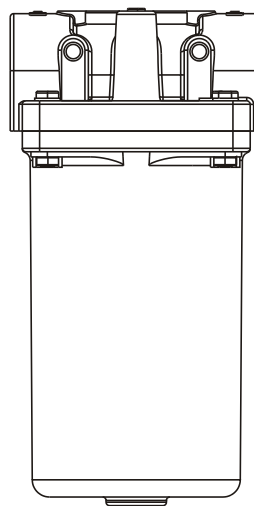
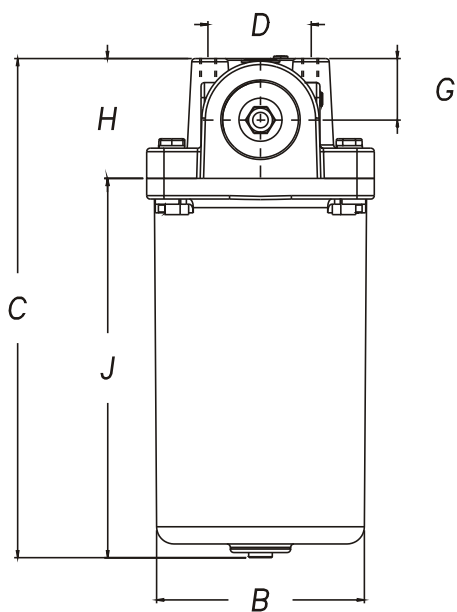
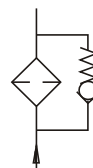
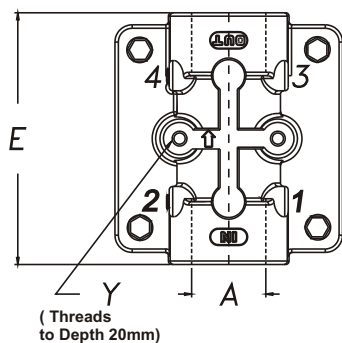


OPTIONAL / SPECIAL FEATURE (CONSULT FACTORY) - OMIT IF NOT REQUIRED

FILTER - INLINE - HFR



- ALUMINIUM DIE CAST CONSTRUCTION
- 3 BASIC MODELS - FLOWS TO 150 LPM
- BY PASS STANDARD 1 BAR
- WORKING PRESSURE TO 20 BAR / TEST 30 BAR / BURST 40 BAR
- MAX TEMP. TO 80° C
- SUITABLE FOR MINERAL / PETROLEUM BASED OILS



MODEL	PORT 'A' BSPP	B	C	D	E	G	H	J	Y 2 OFF	WT KGS
HF * .05	1 / 2"	66	147	38	88	24	44	103	M 8x 1.25	1.0
HF * .10	3/4" 1"	88	176	44	114	27	52	125	M 8x1.25	1.6
HF * .20	1 - 1 / 4" 1 - 1 / 2"	120	290	57	145	36	70	220	M 10x1.5	3.8

DIMENSIONS IN MM FOR REFERENCE ONLY

FILTER - INLINE - HFR



MODEL CODE : ASSEMBLY

HF	R	- 05	- 04*	- 010	- **	- **	- **
TYPE	SIZE	PORT THREAD		FILTRATION*	FEATURE 1	FEATURE 2	FEATURE 3
				μ MICRONS	BY Pass (OMIT IF STD)	Position Indicator Ports (OMIT IF STD)	
R - RETURN	05	04 B	- 1/2" BSPP	P10 - 10 μ NOM	R3 - 15PSI (STD)	R-STD 2 X 1/8" NPT INLET (1 & 2)	U - 3/8" -16 UNC (Optional) (Mounting Holes)
		04 N	- 1/2" NPT				
		08 S	- 3/4" UNF - 16				
S - SUCTION	10	06 B	- 3/4" BSPP	P25 - 25 μ NOM	R4 - 25 PSI	S-STD 2 X 1/8" NPT OUTLET (3 & 4)	
		06 N	- 3/4" NPT				
		12 S	- 1-1/16" UNF - 12				
B - NO BYPASS	20	08 B	- 1" BSPP	A10 - 10 μ ABS	S1 - 3PSI (STD)	B-STD 4 X 1/8" NPT INLET & OUTLET (1, 2, 3 & 4)	
		08 N	- 1" NPT				
		16 S	- 1-5/16" UNF - 12	A25 - 25 μ ABS			
	10 B	- 1-1/4" BSPP	M149 - 149 μ MESH				
	10 N	- 1-1/4" NPT					
	20 S	- 1- 5/8" UNF - 12	M074 - 74 μ MESH				

* Optional Filtration Mesh Elements Available **43 , 63 , 100 , 125, 300 & 575 microns** **INDICATOR** : OPTIONAL (TO BE ORDERED SEPERATELY)

Consult Factory For HFR 20 - 1" Port Option

Consult Factory For Tapped Holes For Cover Bolts

Element : P10 / P25 Was 010 / 025

GR - VISUAL RETURN **ER** - ELEC. RETURN

GS - VISUAL SUCTION **ES** - ELEC. SUCTION

MODEL CODE : ELEMENT

HFE	- 05	- 010
	SIZE	FILTRATION
		μ MICRONS
HFE	05	P10 - 10 μ NOM
		P25 - 25 μ NOM
	10	A10 - 10 μ ABS
		A25 - 25 μ ABS
	20	M149- 149 μ MESH
		M 74- 74 μ MESH

* Optional Filtration Mesh Elements Available **M43 , M63 , M100 ,M125, M300 & M575 microns**

MODEL CODE : SEALING KIT

HFR	- 05	- SK	- **
	SIZE	SEAL KIT	FEATURE # OPTIONAL
HFR	05	SK	
	10	SK	
	20	SK	

OPTIONAL / SPECIAL FEATURE - OMIT IF NOT REQUIRED

Element Details

SIZE	P/A	M	Area SqCm				
	D φ	D φ	B φ	H	P-10/25	A-10/25	M - ***
HFE - 05	52	52	25	90	920	655	360
HFE - 10	72	66	34	109	2205	1575	560
HFE - 20	100	85	51	200	7235	5150	1800

M * All Mesh Elements**

CONSULT FACTORY FOR ANY OTHER REQUIREMENT

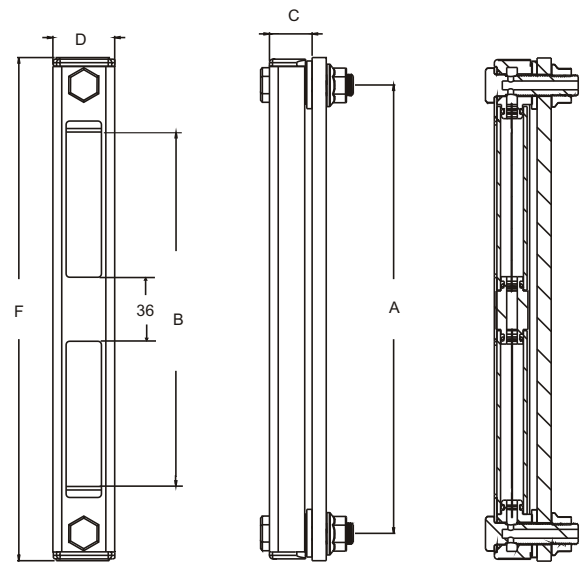
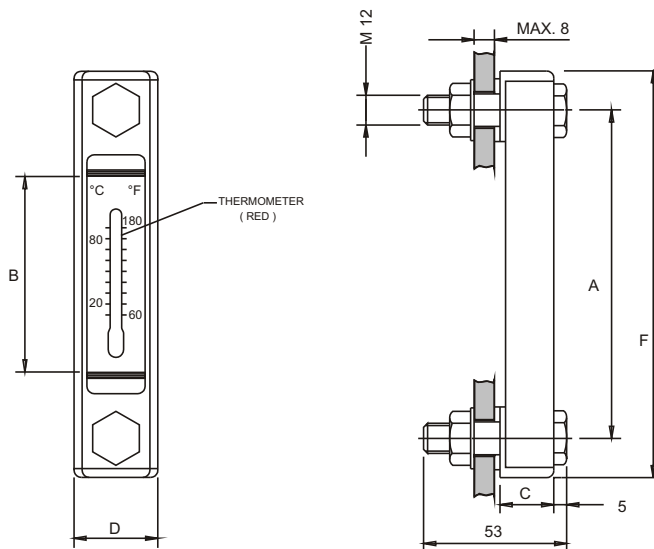


DIMENSIONS IN MM FOR REFERENCE ONLY

LEVEL GAUGE - LG 2



- 'O' RING TYPE CONSTRUCTION
- 3 SIZES 3", 5" & 10" BETWEEN BOLT CENTRES
- FOR NON PRESSURISED TANKS ONLY
- CAN BE MOUNTED ON TAPPED HOLES
- SUITABLE FOR MINERAL / PETROLEUM BASED OILS
- MAXIMUM TEMPERATURE 80° C



LG 2 - 03 & 05

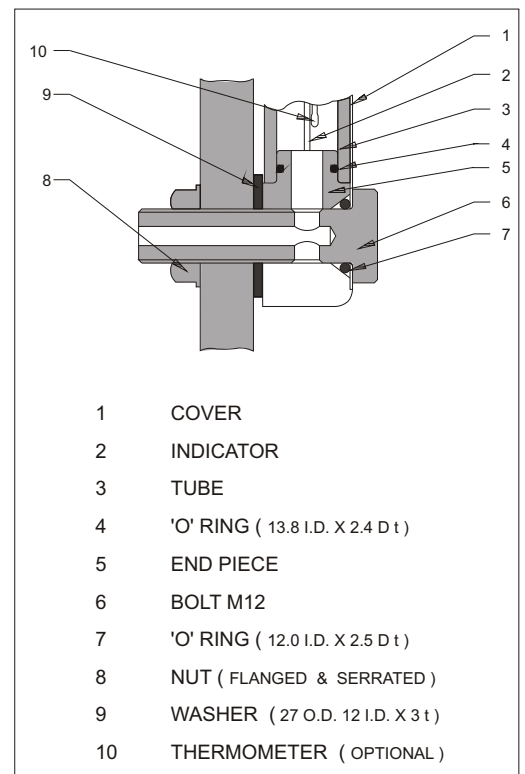
LG 2 - 10

MODEL	A	B	C	D	F	WT KGS
LG2 - 03	76	31	20	34	108	0.23
LG2 - 05	127	76	20	34	159	0.28
LG2 - 10	254	200	20	34	286	0.41

MODEL CODE : ASSEMBLY

LG 2	- 05	T	- M 10	- X
SERIES	SIZE INCH	FEATURE OPTIONAL #	FEATURE SPECIAL #	FEATURE OPTIONAL#
LG 2	03 - 3"	T - THERMOMETER (OMIT IF NOT REQD)	M12 - STD (M12 X 1.75 BOLT)	No Nuts (For Fitting On Tapped Holes)
	05 - 5"		M10 - SPECIAL (M10 X 1.50 BOLT)	
	10 - 10"		UNC - SPECIAL (1/2" - 13 UNC)	

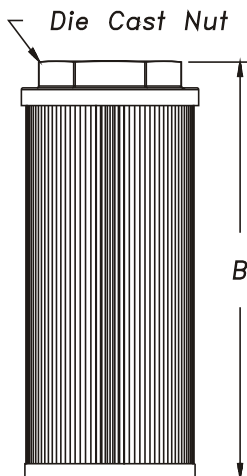
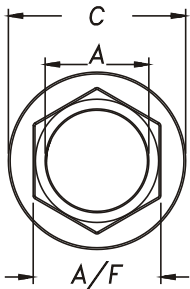
NOTE : BOLT TORQUE TO BE LIMITED TO 3 FT LBS
OPTIONAL / SPECIAL FEATURE - OMIT IF NOT REQUIRED



SUCTION STRAINER - S C 3



- REUSABLE SS 100 MESH / 149 MICRON STD.
- ALUMINIUM DIE CAST NUT
- STEEL CAP / SUPPORT TUBE
- CONTINUOUS EPOXY BOND
- MAX. WORKING TEMP. 80° C.
- SUITABLE FOR HYDRAULIC / MINERAL OIL
- FLEXIBLE MAGNETIC WRAP AVAILABLE



MODEL NO	FLOW LPM	THREAD SIZE A	THREAD CODE	OVERALL LENGTH B	DIA NUT C	NUT A/F	SCREEN AREA (SQ. CMS)	WT KGS	MAGNET WRAP
SC 3 - 0 0 2	8	1 / 4	02	90	46	24	187	0 . 1 0	2
SC 3 - 0 0 3	12	3 / 8	03	90	46	24	187	0 . 1 0	2
SC 3 - 0 0 5	20	1 / 2	04	105	46	30	226	0 . 1 0	2
SC 3 - 0 0 7	28	3 / 4	06	109	64	35	406	0 . 2 0	2
SC 3 - 0 1 0	40	1	08	139	64	46	542	0 . 2 0	2
SC 3 - 0 1 5	60	1 - 1 / 4	10	139	86	51	929	0 . 3 0	2
SC 3 - 0 2 0	80	1 - 1 / 2	12	168	86	60	1161	0 . 3 5	2
SC 3 - 0 3 0	120	1 - 1 / 2	12	200	86	60	1393	0 . 4 0	2
SC 3 - 0 4 0	160	2	16	235	100	70	1806	0 . 5 5	2
SC 3 - 0 5 0	200	2	16	260	100	70	2032	0 . 6 0	2
SC 3 - 0 7 5	300	2 - 1 / 2	20	211	150	90	2787	0 . 8 5	3
SC 3 - 1 0 0	400	3	24	272	150	100	3677	1 . 0 0	3
SC 3 - 1 5 0	600	3	24	345	150	100	4838	1 . 2 5	3

MODEL CODE : ASSEMBLY

SC 3	- 0 1 0	- * *	- * *	- * *	- * *	- * *
SERIES	SIZE	PORT THDS. SIZE	PORT THDS. CONNECTION	MICRONS. OPTIONAL #	FEATURE. SPECIAL 1	FEATURE. SPECIAL 2
		REFER TABLE OMIT IF STD	B-BSP - STD N-NPT - OPTIONAL	149 - SS 100 MESH STD 125 - SS 120 MESH 100 - SS 150 MESH 074 - SS 200 MESH 063 - SS 250 MESH Also - 30 / 60 MESH	R B 3 - 3 PSI ByPass Optional	M - Magnet Wrap Optional

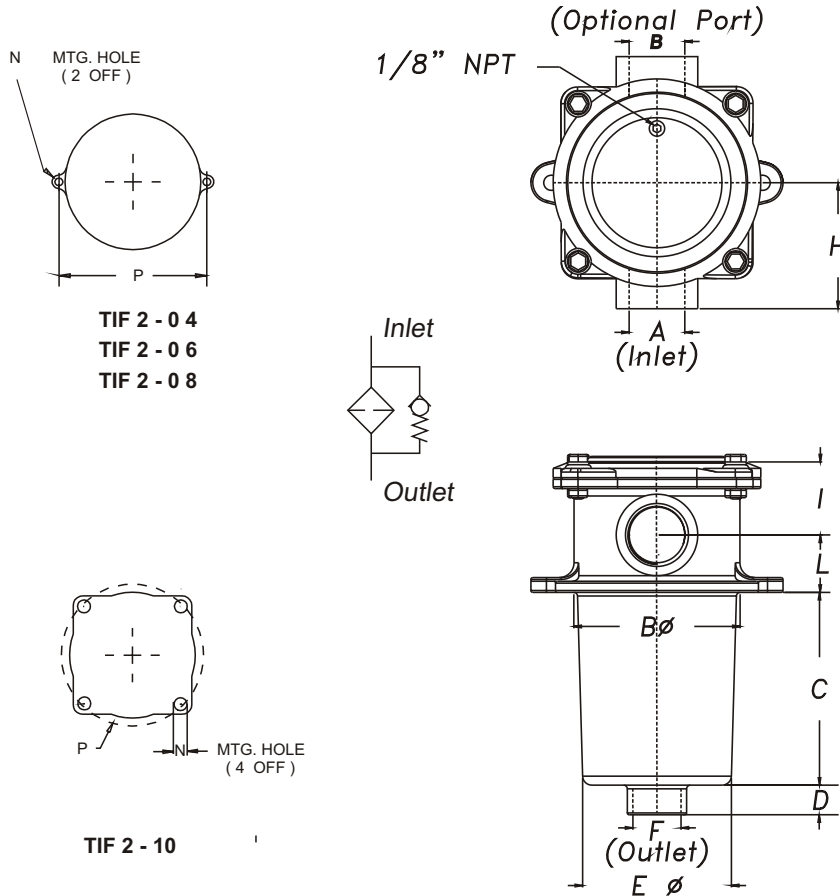
OMIT IF STANDARAD

CONSULT FACTORY, FOR OPTIONAL / SPECIAL FEATURE

FILTER - TANK IMMERSED-TIF2



- DIRECT TANK MOUNTING
- PRESSURE - MAX. 10 BAR / TEST 20 BAR / BURST 25 BAR
- ALL ALUMINIUM DIECAST CONSTRUCTION
- 4 - SIZES FLOWS TO 175 LPM
- BY PASS STANDARD 1 BAR
- ELEMENTS REPLACEBLE THROUGH COVER
- SUITABLE FOR MINERAL / PETROLEUM BASED OILS
- MAX TEMP. 80 deg C



MODEL	PORT 'A' BSPP	PORT 'B' BSPP	TANK CUT OUT B	C	D	E	PORT 'F' BSPP	H	I	L	N	P	WT KGS
TIF2 - 04	1 / 2"	-	64	60	15	62	1 / 2"	51	28	24	6.6	90	0.7
TIF2 - 06	3 / 4"	-	86	75	15	81	3 / 4"	69	34	26	8.2	114	1.4
TIF2 - 08	1"	-	86	104	15	81	3 / 4"	68	37	32	8.4	114	1.5
TIF2 - 06 / 08	1"	3 / 4"	86	104	15	81	3 / 4"	68	37	32	8.4	114	1.5
TIF2 - 10	1 - 1 / 4"	1 - 1 / 4"	129	215	20	122	1 - 1 / 4"	88	54	44	10.5	175	4.3

DIMENSIONS IN MM FOR REFERENCE ONLY

FILTER - TANK IMMERSED - TIF2



MODEL CODE : ASSEMBLY

TIF 2	- Port A (Std)	- Port B (Optional)	- Element	- Feature
Series	PORT THREAD	PORT THREAD Omit If Not Req'd	- Filtration Micron	- # Omit If Standard
2 - ALL CAST	04 B - 1/2" BSPP		P10 - 10µ NOM	R3 - 15 PSI BYPASS STANDARD
	04 N - 1/2" NPT		P25 - 25µ NOM	
	08 S - 3/4" UNF - 16		A10 - 10µ ABS	
	06 B - 3/4" BSPP		A25 - 25µ ABS	
	06 N - 3/4" NPT		M149 - 149µ MESH	
	12 S - 1-1/16" UNF - 12		M100 - 100µ MESH	
	08 B - 1" BSPP	06 B - 3/4" BSPP	M074 - 074µ MESH	R4 - 25 PSI BYPASS OPTIONAL
	08 N - 1" NPT	06 N - 3/4" NPT	M063 - 063µ MESH	
	16 S - 1-5/16" UNF - 12	12 S - 1-1/16" UNF - 12		
	10 B - 1-1/4" BSPP	10 B - 1-1/4" BSPP		
	10 N - 1-1/4" NPT	10 N - 1-1/4" NPT		
	20 S - 1- 5/8" UNF - 12	20 S - 1- 5/8" UNF - 12		

INDICATOR : OPTIONAL (TO BE ORDERED SEPERATELY)

OPTIONAL / SPECIAL FEATURE - OMIT IF NOT REQUIRED

GR - VISUAL RETURN ER - ELEC. RETURN

Consult Factory For Tapped Holes For Cover Bolts

GS - VISUAL SUCTION ES - ELEC. SUCTION

Element : P10 / P25 Was 010 / 025

MODEL CODE : ELEMENT

TIE	- 08	- 010	- Feature
SERIES	SIZE	FILTRATION µ MICRON	- # Omit If Standard
TIE	04	P10 - 10 µ NOM P25 - 25 µ NOM	R3 - 15 PSI BYPASS STANDARD
	06	A10 - 10 µ ABS A25 - 25 µ ABS	
	08	M149 - 149 µ MESH M100 - 100 µ MESH	
	10	M074 - 074 µ MESH	R4 - 25 PSI BYPASS OPTIONAL
		M063 - 063 µ MESH	

WITH BYPASS

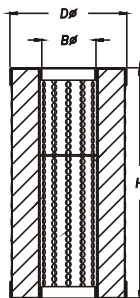
MODEL CODE : SEAL KIT

TIF2	- 08	-SK
SERIES	SIZE	SEAL KIT
TIF2	04	SK
	06	SK
	08	SK
	10	SK

OPTIONAL / SPECIAL FEATURE - OMIT IF NOT REQUIRED

Element Details

SIZE	D φ	B φ	H	Area SqCm		
				P-10/25	A-10/25	M - ***
TIE - 04	52	25.5	72	710	500	325
TIE - 06	66	30.5	85	1225	875	425
TIE - 08	66	30.5	130	2450	1750	665
TIE - 10	100	40.5	245	6120	4300	2360



M *** All Mesh Elements

CONSULT FACTORY FOR ANY OTHER REQUIREMENT

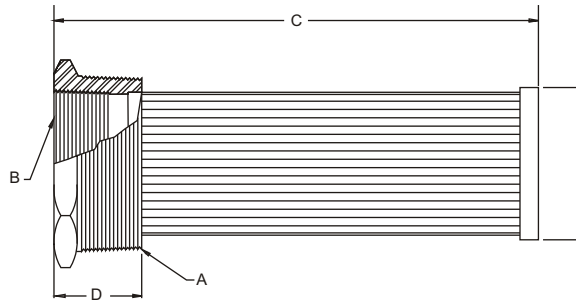
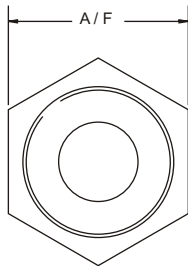


DIMENSIONS IN MM FOR REFERENCE ONLY

TANK MOUNTED STRAINER - TMS



- TANK MOUNTED REUSABLE STRAINER
- SIDE WALL OR TANK TOP MOUNTING
- FLOWS TO 200 GPM (800 LPM)
- STAINLESS STEEL PLEATED MEDIA
- 100 MESH (149 MICRON) STANDARD
- M.S. / C.I. BUSHING



Series	NUT	Bushing Size Dim. A x Dim. B N.P.T	LPM / GPM Rating	Screen Area SQ. IN.	Dimensions			A / F	WT KGS
					C	D	E		
TMS - 003	MS	3/4" x 3/8"	12 / 3	30	101.6	25	20	30	0.13
TMS - 005	MS	1" x 1/2"	20 / 5	55	137.0	28	28	38	0.20
TMS - 010		1 - 1/4" x 3/4"	40 / 10	90	190.0	31	36	46	0.35
TMS - 015	MS	1 - 1/2" x 1"	60 / 15	110	210.0	33	42	50	0.41
TMS - 025	CI	2" x 1 - 1/4"	100 / 25	175	254.0	33	54	66	0.62
TMS - 030	CI	3" x 1 - 1/4"	120 / 30	265	260.0	43	78	66	1.12
TMS - 040	CI	3" x 1 - 1/2"	160 / 40	265	260.0	43	78	66	1.12
TMS - 050	CI	3" x 2"	200 / 50	265	260.0	43	78	82	1.12
TMS - 060	CI	3" x 2 - 1/2"	240 / 60	265	260.0	51	78	90	1.25
TMS - 075	CI	4" x 2 - 1/2"	300 / 75	300	246.0	46	96	118	2.10
TMS - 100	CI	4" x 3"	400 / 100	355	287.0	46	96	118	1.75
TMS - 200	AL	6" x 4"	800 / 200	860	316.0	58	145	144	2.67

MODEL CODE : ASSEMBLY

TMS	- 005		- 149	- RB3
SERIES	SIZE	NPT THD NORMS STD THD 'A' THD 'B'	μ MICRONS	OPTIONAL
TMS	003	06N 03N		
	005	08N 04N		
	010	10N 06N		
	015	12N 08N	149 - SS 100 MESH STD	RB3 3 P.S.I. BYPASS VALVE
	025	16N 10N	125 - SS 120 MESH	(OMIT IF NOT REQD.)
	030	24N 10N	100 - SS 150 MESH	
	040	24N 12N	074 - SS 200 MESH	
	050	24N 16N	063 - SS 250 MESH	
	060	24N 20N	Also - 30 / 60 MESH	
	075	32N 20N	(OMIT IF STD.)	
	100	32N 24N		
200	48N 32N			

Recommended Weld Flange

To Be Ordered
Separately

TWF - 06N

TWF - 08N

TWF - 10N

TWF - 12N

TWF - 16N

TWF - 24N

TWF - 24N

TWF - 24N

TWF - 24N

CONTACT FACTORY FOR OPTIONAL FEATURE